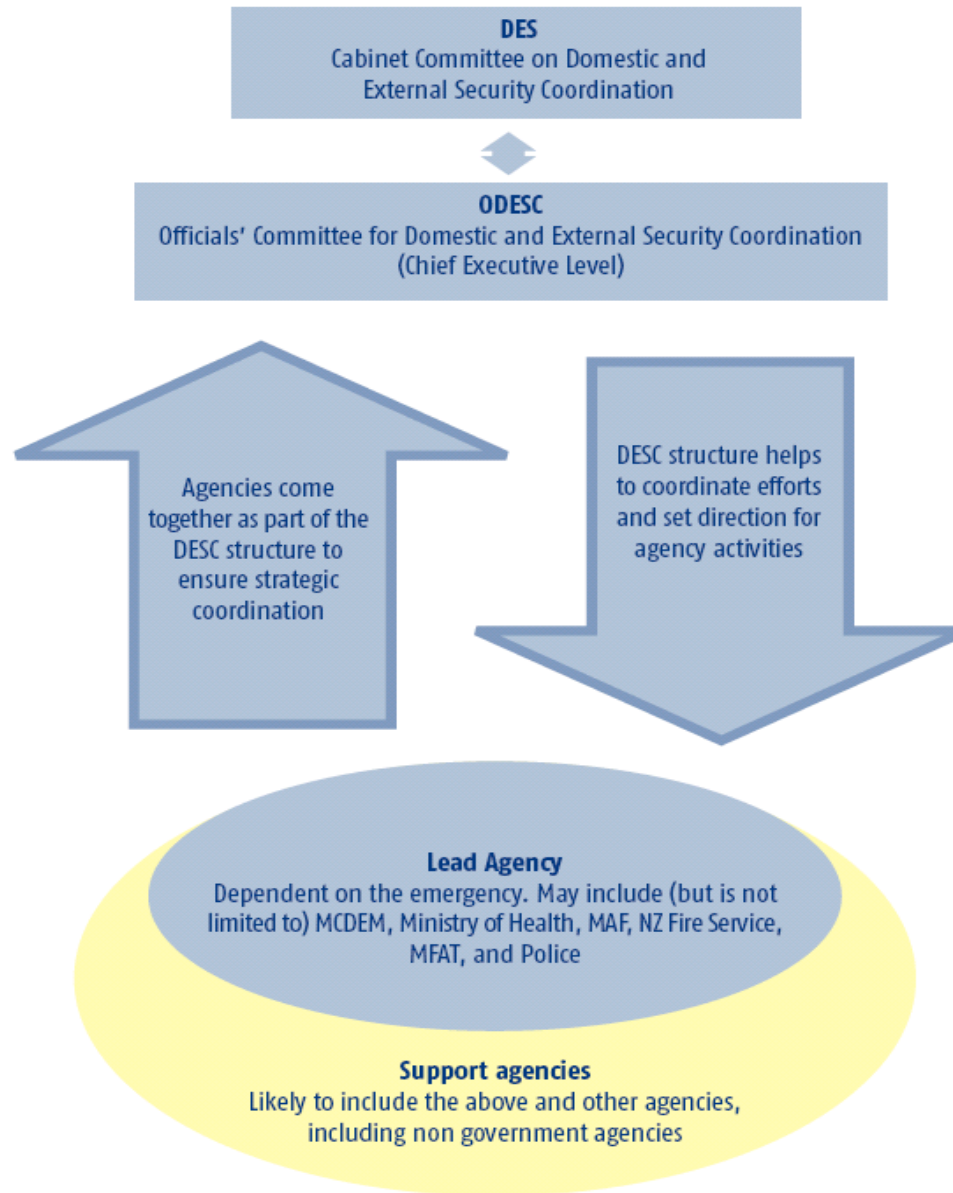


New Zealand's National Crisis Management Arrangements



The 4Rs – New Zealand's integrated approach to CDEM

Reduction

Identifying and analysing long-term risks to human life and property from hazards; taking steps to eliminate these risks if practicable, and, if not, reducing the magnitude of their impact and the likelihood of their occurring.

Readiness

Developing operational systems and capabilities before a civil defence emergency happens; including self-help and response programmes for the general public, and specific programmes for emergency services, lifeline utilities and other agencies.

Response

Actions taken immediately before, during or directly after a civil defence emergency to save lives and protect property, and to help communities recover.

Recovery

The coordinated efforts and processes to bring about the immediate, medium-term and long-term holistic regeneration of a community following a civil defence emergency.

New Zealand's Civil Defence Emergency Management Framework



Civil Defence Emergency Management Act and Building Act relationship

Current

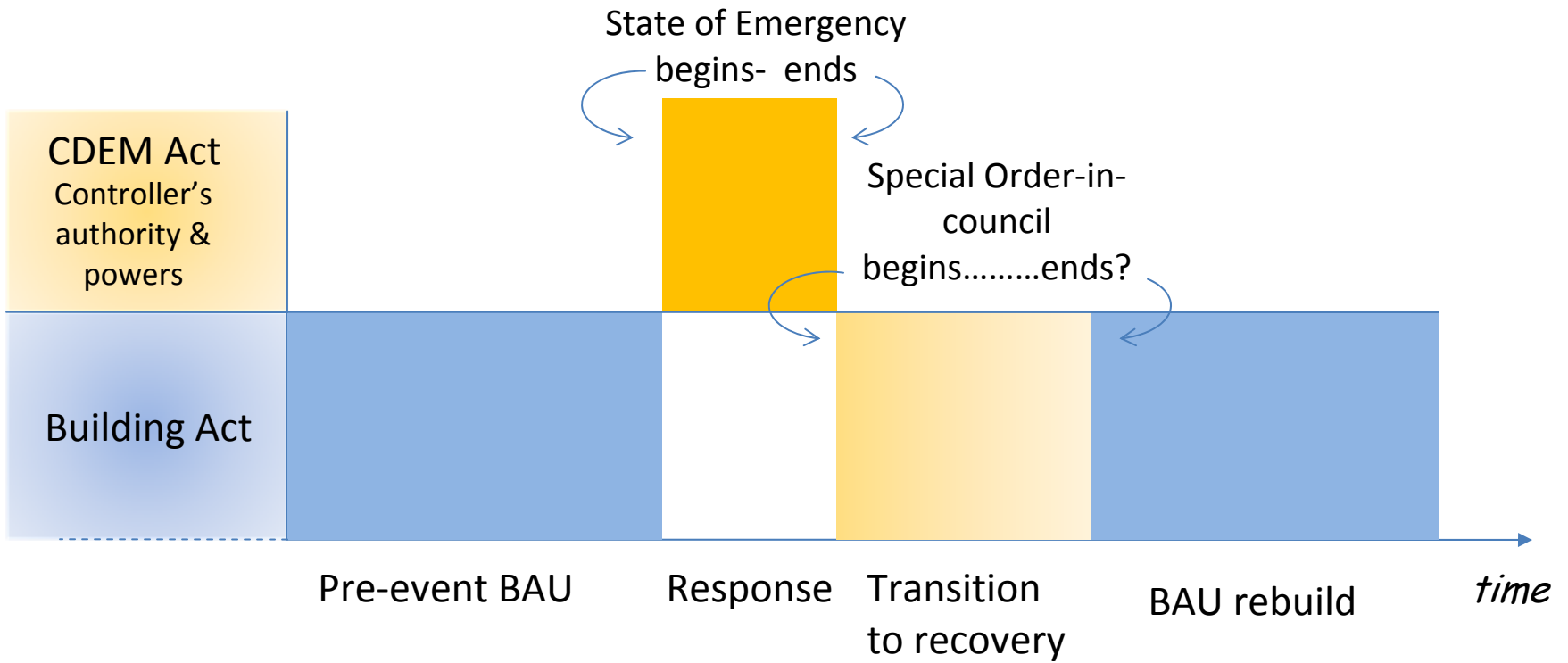


Figure One: Current building emergency evaluation arrangements without transitions and underpinning BAU support

Civil Defence Emergency Management Act and Building Act relationship

Proposed

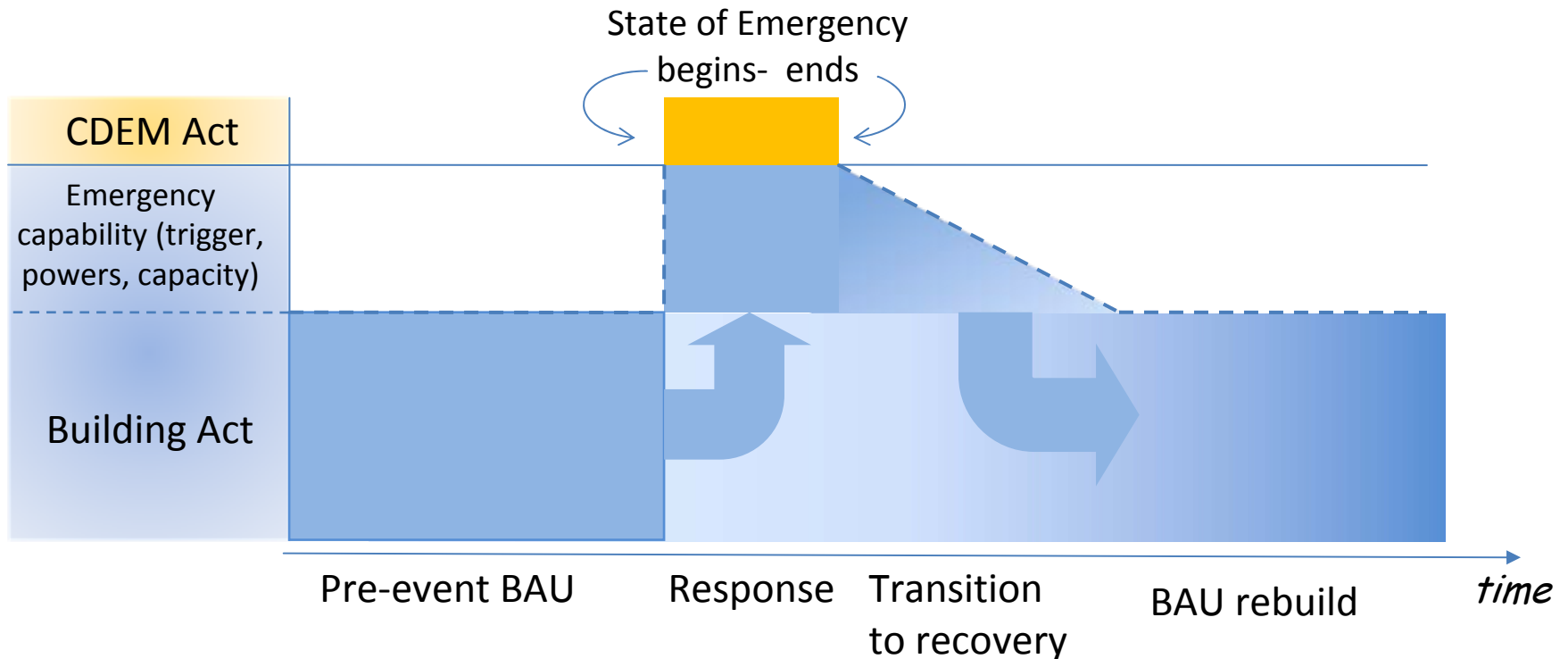


Figure Two: Proposal for Building Act emergency building evaluation arrangements integrated with BAU arrangements